

- **Applications of, and comparisons of, learning theories:**

Complete the following jigsaw....

- Match the names of researchers with photos from their experiment and the type of learning they investigated (make sure you finish off their definition too.) Paste it onto an A3 sheet of paper
- Once you have done that fill in the boxes of information and match the background information to the type of learning. Make it a visual summary sheet.

JOHN WATSON

ALBERT BANDURA

IVAN PAVLOV

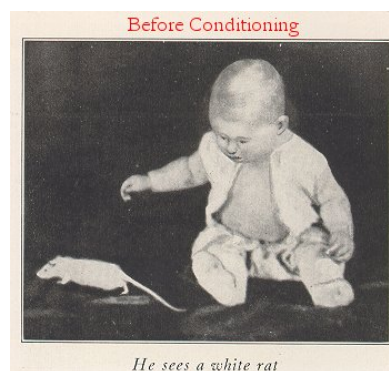
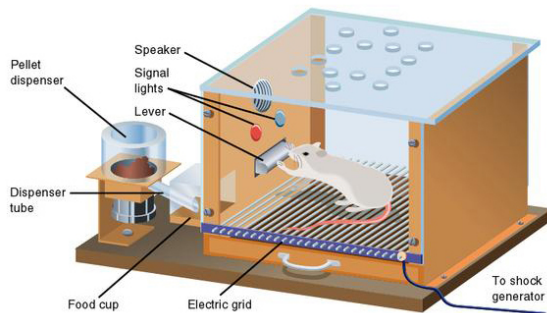
B.F. SKINNER

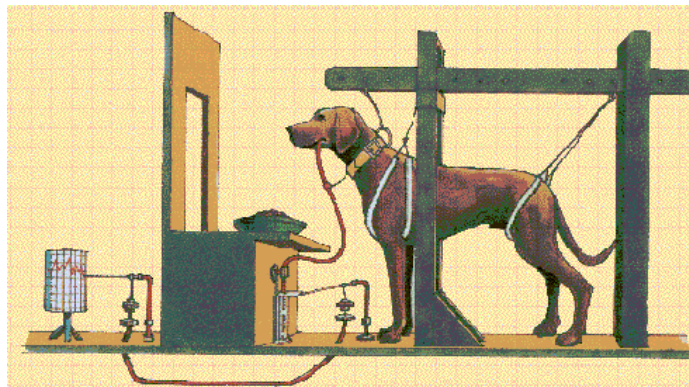
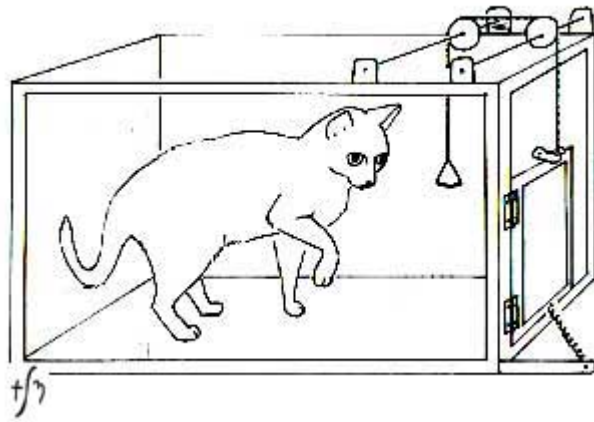
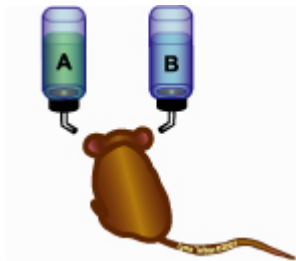
EDWARD THORNDIKE

WOLFGANG KOHLER

EDWARD TOLMAN

JOHN GARCIA & ROBERT KOELLING





Trial and error learning is.....

Latent learning is.....

Insight learning is.....

One trial learning is.....

Observational learning is.....

A conditioned emotional
response is.....

The four stages of observational learning are (name and explain):

*

*

*

*

The 5 elements in classical conditioning (named and defined) are:

*

*

*

*

*

Watson tried to condition a _____.

In doing so he breached the following ethics (explain how):

*

*

*

The Skinner box showed how the following principles worked:

* Shaping –

* Stimulus generalisation –

* Variable interval schedule –

* Extinction –

* Use of effective punishment/reinforcement –

Discuss two similarities between one trial learning and classical conditioning and two differences:

Similarities:

Differences:

Provide an example of latent learning:

The typical trial and error curve looks like

The four stages of insight learning are (name and describe):

*

*

*

*

